

paul frank



eyewear
collection



20
11



contents



Incorporated in 1997 by a few friends in Huntington Beach, California, Paul Frank was originally established as a gift and accessory company, crafting handmade vinyl wallets and bags as gifts for friends and small boutiques throughout Southern California. As the popularity for their products surged, new categories of products were introduced including pajamas, t-shirts, sportswear, eyewear, watches, bicycles, and several other relevant items building what would become the Paul Frank lifestyle brand.



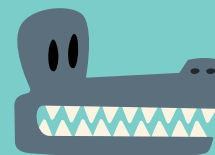
sun

- 02** HANDMADE EYEWEAR
- 05** 159 NO THRILLS FOR THE CAUTIOUS
154 LOST IN THE LIBRARY (S)
153 TOMORROW NOON (S)
152 INSTANT INTELLECTUAL (S)
151 MY EXCUSE TO TRAVEL
- 06** 158 STARSTRUCK
150 THE STARS WHERE WE CAME FROM
149 I'D RATHER DANCE WITH YOU
148 A SACRIFICE TO SOPHISTICATION
147 LOVERS IN THE SPRINGTIME
- 07** 146 LOWEST COMMON DOMINATOR
145 CINEMA OLYMPIA
- 08** 144 FAR AWAY AND LOST IN JOY
143 S.O.S.
- 09** 157 UNTIL THE BIRDS RETURN
142 MY DAILY VACATION
141 THE EQUESTRIAN
140 FEEL MY HEAT
139 EVERYTHING HITS AT ONCE
- 10** 156 BRAND NEW DAY
138 BYE BYE BLUES
135 THE SPORTING LIFE
134 BACK ON THE MOTORWAY
131 OLYMPIC AIRWAYS
- 11** 130 SUNSHINE, CLOUDS & EVERYTHING PROUD
126 WHITE LIPS KISSED
122 GOLD IN THE AIR OF SUMMER
118 LEGION OF INDECENCY
117 DIGITALIST
116 SLINGSHOT
- 12** 155 SLEEPLESS IN SILVERLAKE
113 BENEATH THE BLEACHERS
111 FLUORESCENT ADOLESCENT
108 THEY CALL HER ACTION
104 THE CRAFTY ENGINEER
- 13** 102 MY BRIGHT FUTURE
099 FIST FULL OF DOLLARS
- 14** 073 JETS TO BRAZIL
068 LOVERS IN THE BACK SEAT
- 16** LIMITED EDITION PEARL SERIES

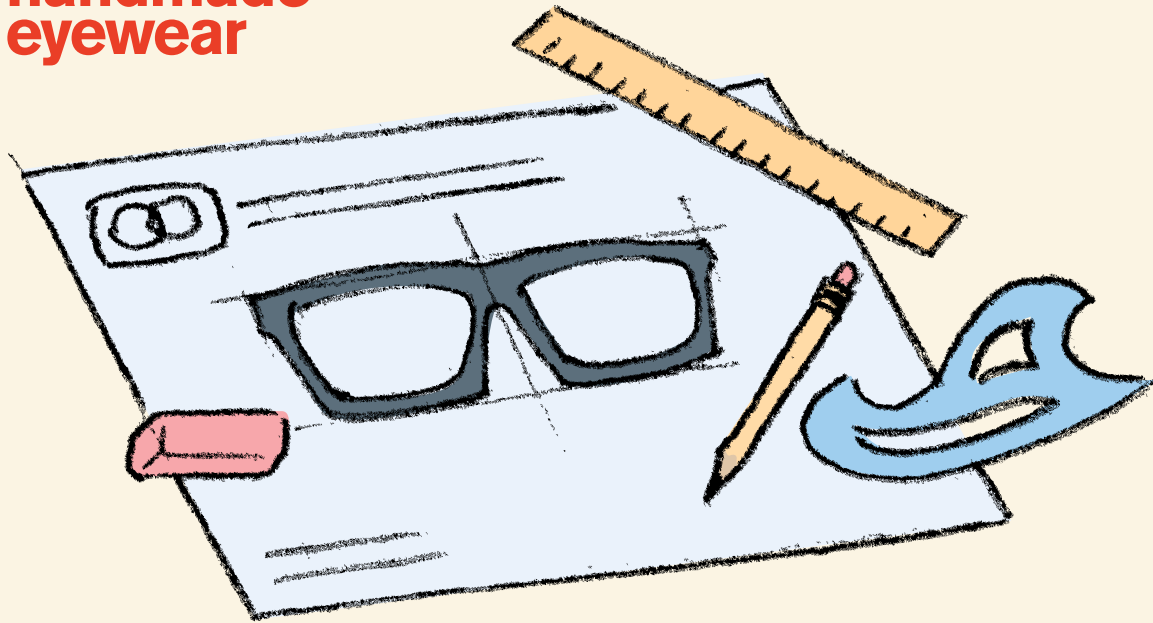


rx

- 21** RX87 KID ROYALE
RX80 BLANK GENERATION
RX79 HOPSCOTCH HOLIDAY
RX78 HIGHER THAN THE STARS
RX77 HIGHWAY TO HELL-O
- 22** RX86 CLEAR SPIRITS
RX76 UNTIL NEXT SUMMER
RX75 AGNES IN AMSTERDAM
RX74 ELEVATOR EYES
RX72 FINDING FOCUS WITHIN
- 23** RX71 TOUR DE FRIENDS
RX70 MY HEART RATES RAPID
- 24** RX69 NAPOLEON'S KRYPTONITE
RX68 BLUE SKY REVOLUTION
- 25** RX85 HOLD MY HAND AS WE ASCEND
RX67 INSTANT INTELLECTUAL
RX66 POST AEROSOL YEARS
RX64 HIGH FIVE HOLIDAY
RX61 PEACE OF MIND
- 26** RX84 WITH YOU IN ROCKLAND
RX60 A FRIEND IN TWEED IS A FRIEND INDEED
RX59 THE PATH OF LEAST RESISTANCE
RX58 LOST IN THE LIBRARY
RX56 MUSTACHE MUSEUM
- 27** RX55 HIDDEN HANDSHAKE
RX54 HARMONY IN MY HEAD
RX52 PAPER PLANES
RX47 TRIED AND TRUE
RX83 TOMORROW NOON
- 28** RX82 A SENTIMENTAL MOOD
RX46 STAR CLAIMER
RX45 STYLE COUNCIL LUNCHBREAK
RX44 MINIATURE PHILOSOPHER
RX36 DRAG RACE TO FREEDOM
- 29** RX35 ALL NIGHT DISCO PARTY
RX32 SELF PRESERVATION SOCIETY
- 30** RX81 BLANK GENERATION
RX27 A IS FOR ACTION
RX25 BEAT POET HOLIDAY
RX07 PINKERTON
RX05 BLUES EXPLOSION



handmade eyewear



step one: design

Our design staff, at Paul Frank, prides themselves on creating attributes that are unique to each brand. We refuse to find influence in other collections, but rather look to furniture, architecture, and the depth of our own catalog for inspiration.

materials

LENSES: CR-39 is transparent in the visible spectrum and almost completely opaque in the ultraviolet range, it has high abrasion resistance, and is an advantageous material for RX and sunglass lenses. Paul Frank's SOLA® CR-39 lenses are an exclusive combination of treatments offering the finest eye protection and visual comfort. SOLA® CR-39 lenses, manufactured in France, are 99.9% distortion free, have a scratch resistant to most chemicals, gamma radiation, aging, and material fatigue. It can be used continuously in temperatures up to 100°C and up to one hour in 130°C.

ZYL: All Paul Frank eyewear is produced from Italian Mazzucchelli Zyl, which is short for zylonite, the trademark name for cellulose acetate. Zyl is raw material which has become the base for high fashion and durable optometrics. Zyl is a top quality plastic that originates from natural cotton and wood pulp. Its ability to maintain color brightness derives from its long-lasting material which, during manufacturing, is embedded rather than sprayed, preventing any color peeling. The unique aging stabilizers prevent yellowing, fading, or discoloring from UV light or skin contact.

COMPONENTS: All components are imported from a company by the name of Comotech®, based in Germany. The hinges and core wire are stainless steel. Our metal frames are made from surgical grade nickel-silver, a high quality metal which is 100% corrosion resistant (it won't turn you green behind the ears!) and prized for its adaptability and durability.

attributes

HYPO-ALLERGENIC: Our frames are more suitable for sensitive skin than any nylon/injected frame. Some people have an allergic reaction to certain metals (especially nickel) and certain plastics, which are common components used to make eyewear. Paul Frank's hypo-allergenic frames do not contain such materials.

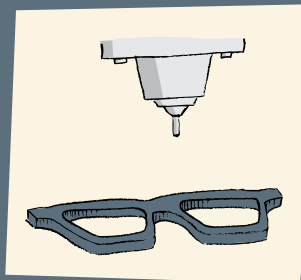
COTTON-BASED: Believe it or not, Paul Frank frames stem from the natural fiber, cotton. Contrary to injected frames, which originate from petroleum, our eyewear contains stabilizers and plasticizers to retain pliability.

RX-ABLE: All Paul Frank eyewear can be "rx-ed," meaning opticians can insert prescription lenses in all of our frames. Nylon frames, on the other hand, do not have the capability of being rx-ed, which is why you will not find injected brands in reputable optical retailers.

THE PERFECT FIT: Handmade frames are always preferred by opticians. They can be heated and molded to perfectly fit any face. The combination of zyl material and core wire insertions, inside the temples, allow our frames to be adjusted to fit all face shapes. Did you know that 90% of all human beings have one ear that is slightly lower (or higher) than the other? Opticians are trained to adjust all Paul Frank eyewear to provide "the perfect fit."

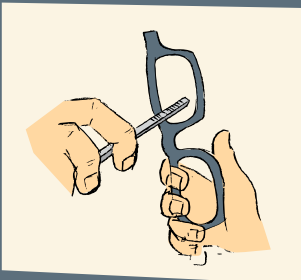
warranty

To assure consumers the highest quality level, we at Paul Frank guarantee that if a manufacturing defect is verified, the frame or part of the frame deemed defective will be replaced free of charge.



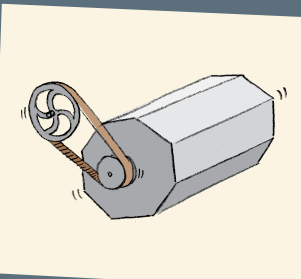
step two: cutting

Every year, we create over 20 combinations of custom made plastics that are unique to each collection. These combinations are applied to a flat piece of zyl (acetate) that is manufactured in Northern Italy. During the cutting process a computer controlled router cuts the acetate directly from an Autocad® drawing created by Paul Frank designers.



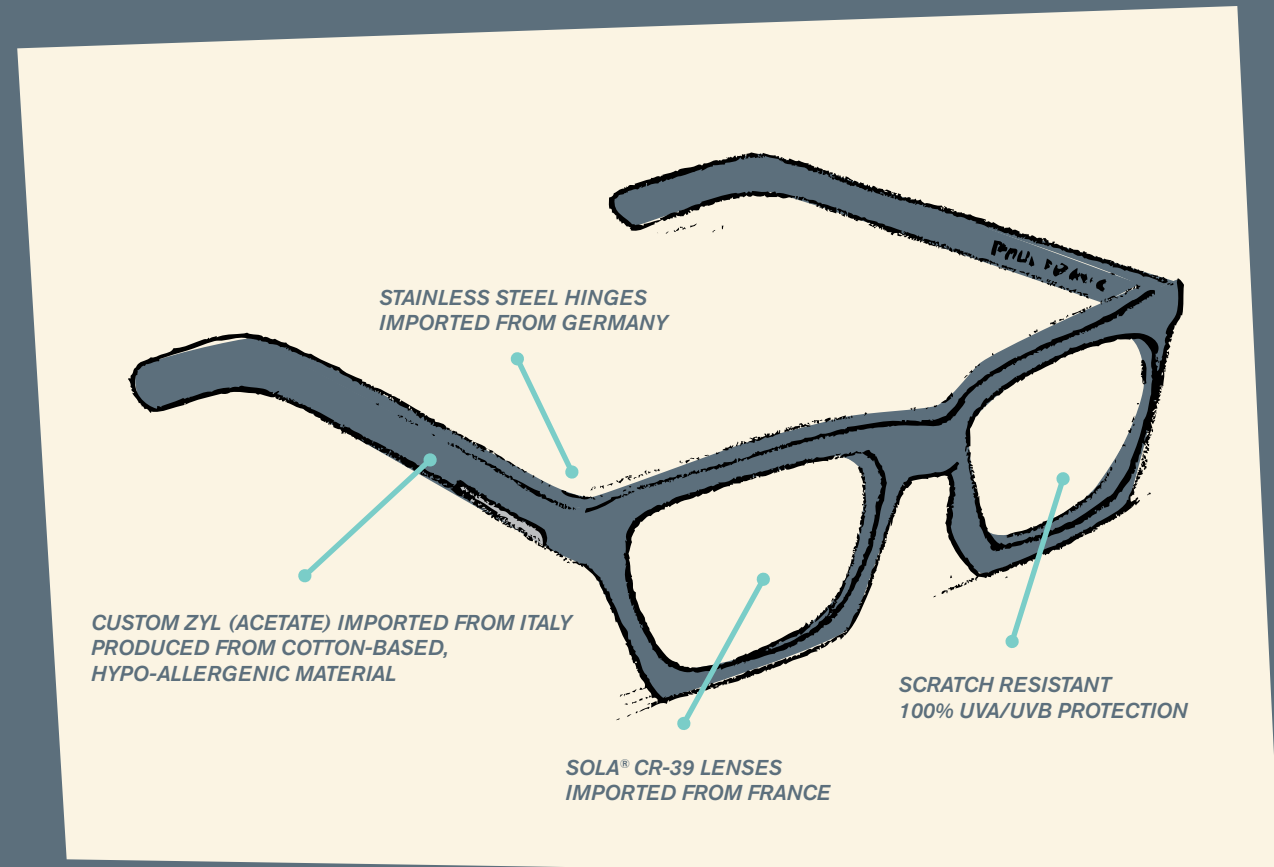
step three: milling & assembly

Highly trained technicians assemble all the individual components of the frames. Because screws are made to loosen, the Paul Frank technicians add a drop of Loctite® to ensure that the screws stay nice and secure. After the components are assembled, the technician "forms" the frame to a predetermined template. The frames is then checked by the most senior technician using a micrometer at tolerances to one-hundredth of an inch.



step four: finishing

Our eyewear is polished by a procedure which involves the frames tumbling in a barrel of wood chips and small stones (pretty old school!). The frames turn like butter for about 12 hours. In some instances, the design is so intricate that our technicians can only polish the frames by hand for longer lasting luster. This is done by holding the frame on a polishing wheel, similar to the way jewelry is polished.





shown: Until the Birds Return in new millennium tortoise

159 - NO THRILLS FOR THE CAUTIOUS
59□15-140



AVAILABLE IN: BLACK, BROWN/GOLD PEARL, BURGUNDY/SEAFOAM, NEW MILLENNIUM TORTOISE

154 - LOST IN THE LIBRARY (S)
53□17-140



AVAILABLE IN: BLACK, BROWN/GOLD PEARL (LTD ED), CARAMEL/SEAFOAM, MATTE BLACK, NEW MILLENNIUM TORTOISE

153 - TOMORROW NOON (S)
56□15-140



AVAILABLE IN: BLACK, NEW MILLENNIUM TORTOISE

152 - INSTANT INTELLECTUAL (S)
55□17-140



AVAILABLE IN: MATTE BLACK, NEW MILLENNIUM TORTOISE

151 - MY EXCUSE TO TRAVEL
58□15-140



AVAILABLE IN: BLACK, BURNT UMBER, CRANBERRY, MATTE BROWN/ORANGE, NEW MILLENNIUM TORTOISE, WHITE/BROWN

158 - STARSTRUCK
56□14-140



AVAILABLE IN: BROWN/GOLD PEARL (LTD ED), BURGUNDY/SEAFOAM,
NEW MILLENNIUM TORTOISE, SEA/GREEN PEARL (LTD ED)

150 - THE STARS WHERE
WE COME FROM
53□15-140



AVAILABLE IN: BLACK, BURNT UMBER, CRANBERRY,
MATTE BROWN/ORANGE, NEW MILLENNIUM TORTOISE, WHITE/BROWN

149 - I'D RATHER DANCE WITH YOU
54□18-140



AVAILABLE IN: BLACK, CRANBERRY, MATTE BLACK,
MATTE BROWN/ORANGE, NEW MILLENNIUM TORTOISE

148 - A SACRIFICE TO SOPHISTICATION
53□19-138



AVAILABLE IN: BLACK, BROWN/GOLD PEARL (LTD ED),
CRANBERRY, MATTE BLACK, NEW MILLENNIUM TORTOISE,
SEA/GREEN PEARL (LTD ED), WHITE/BROWN

147 - LOVERS IN THE SPRINGTIME
56□15-138



AVAILABLE IN: BLACK, CRANBERRY,
NEW MILLENNIUM TORTOISE, WHITE/BROWN

146 - LOWEST COMMON DOMINATOR
58□16-140



AVAILABLE IN: BLACK, CRIMSON STRIPE,
SIENNA STRIPE, WHITE/BROWN

145 - CINEMA OLYMPIA
58□15-140



AVAILABLE IN: BLACK, BURNT UMBER,
CRIMSON STRIPE, WHITE/BROWN

shown: Lovers in the Springtime in white/brown





PAUL FRANK

157 - UNTIL THE BIRDS RETURN
57□15-138



AVAILABLE IN: BURGUNDY/SEAFOAM, BURNT UMBER, NEW MILLENNIUM TORTOISE, SEA/GREEN PEARL (LTD ED)

142 - MY DAILY VACATION
59□12-138



AVAILABLE IN: BURNT UMBER, CAMEL/SEAFOAM, CRANBERRY, WHITE/BROWN

141 - THE EQUESTRIAN
57□15-138



AVAILABLE IN: BLACK, BURNT UMBER, BLUE ICE (LTD ED), CAMEL/SEAFOAM, WHITE/BROWN

144 - FAR AWAY AND LOST IN JOY
57□15-140



AVAILABLE IN: BURNT UMBER, CAMEL/SEAFOAM, CRIMSON STRIPE, GREY/PINK PEARL (LTD ED), SEA/GREEN PEARL (LTD ED), WHITE/BROWN

143 - S.O.S.
52□18-140



AVAILABLE IN: BURNT UMBER, CAMEL/SEAFOAM, CRIMSON STRIPE

140 - FEEL MY HEAT
60□13-138



AVAILABLE IN: BLACK, BURNT UMBER, WHITE/BROWN

139 - EVERYTHING HITS AT ONCE
56□14-138



AVAILABLE IN: BLUE ICE (LTD ED), BURNT UMBER, CAMEL/SEAFOAM, WHITE/BROWN

156 - BRAND NEW DAY
61□14-135



AVAILABLE IN: BROWN/GOLD PEARL (LTD ED), BURGUNDY, BURGUNDY/SEAFOAM, NEW MILLENNIUM TORTOISE

130 - SUNSHINE, CLOUDS, & EVERYTHING PROUD
58□14-138



AVAILABLE IN: AQUA/SEAFOAM, BURGUNDY/SEAFOAM, WHITE/BROWN

126 - WHITE LIPS KISSED
59□16-135



AVAILABLE IN: BURGUNDY/SEAFOAM, BURNT UMBER, CRANBERRY, WHITE/BROWN

122 - GOLD IN THE AIR OF SUMMER
59□14-130



AVAILABLE IN: AMBER/YELLOW, BURGUNDY/SEAFOAM, BURNT UMBER, CRANBERRY, CRIMSON STRIPE, WHITE/BROWN

118 - LEGION OF INDECENCY
60□13-133



AVAILABLE IN: BLACK, BROWN/GOLD PEARL (LTD ED), BURGUNDY, BURNT UMBER, MATTE BROWN/ORANGE, SEA/GREEN PEARL (LTD ED)

138 - BYE BYE BLUES
60□13-138



AVAILABLE IN: BLUE ICE (LTD ED), BURNT UMBER, BROWN/GOLD PEARL (LTD ED), CRANBERRY, WHITE/BROWN

135 - THE SPORTING LIFE
60□12-138



AVAILABLE IN: AZURE STRIPE, BLACK, BROWN/GOLD PEARL (LTD ED), BURNT UMBER, CRANBERRY, CRIMSON STRIPE, GREY/PINK PEARL (LTD ED), SEA/GREEN PEARL (LTD ED), SIENNA STRIPE, WHITE/BROWN

117 - DIGITALIST
58□11-133



AVAILABLE IN: AQUA/SEAFOAM, BLACK, BURGUNDY, BURNT UMBER, GREY/PINK CHECK, TORTOISE, WHITE/BROWN

116 - SLINGSHOT
60□15-130



AVAILABLE IN: BLACK, BURGUNDY, BURNT UMBER

134 - BACK ON THE MOTORWAY
59□11-138



AVAILABLE IN: BLACK, BURNT UMBER, WHITE/BROWN

131 - OLYMPIC AIRWAYS
60□09-135



AVAILABLE IN: BLACK, BROWN/GOLD PEARL (LTD ED), BURNT UMBER, MATTE BLACK, NEW MILLENNIUM TORTOISE, SEA/GREEN PEARL (LTD ED), WHITE/BROWN



155 - SLEEPLESS IN SILVERLAKE

55□19-140



AVAILABLE IN: BLACK, BROWN/GOLD PEARL (LTD ED),
NEW MILLENNIUM TORTOISE, SEA/GREEN PEARL (LTD ED)

113 - BENEATH THE BLEACHERS

61□13-135



AVAILABLE IN: BURGUNDY/SEAFOAM,
BURNT UMBER, CRIMSON STRIPE, WHITE/BROWN

111 - FLUORESCENT ADOLESCENT

62□12-133



AVAILABLE IN: BLACK, BURGUNDY/SEAFOAM, BURGUNDY,
BURNT UMBER, CRANBERRY, WHITE/BROWN

108 - THEY CALL HER ACTION

63□13-130



AVAILABLE IN: BURGUNDY/SEAFOAM,
BURGUNDY, BURNT UMBER

104 - THE CRAFTY ENGINEER

56□18-135



AVAILABLE IN: AQUA/SEAFOAM, BLACK, BROWN/GOLD PEARL (LTD ED),
BURNT UMBER, GREY/PINK PEARL (LTD ED), MATTE BLACK,
NEW MILLENNIUM TORTOISE, WHITE/BROWN

shown: I'd Rather Dance With You in matte black



102 - MY BRIGHT FUTURE

57□17-133



AVAILABLE IN: AQUA/SEAFOAM, BLUE ICE (LTD ED),
BLACK, MATTE BLACK, TORTOISE, WHITE/BROWN

099 - FIST FULL OF DOLLARS

61□12.7-135



AVAILABLE IN: AZURE STRIPE, BLACK, BURGUNDY/SEAFOAM,
BURGUNDY, BURNT UMBER, CHOCOLATE STRIPE, CRANBERRY,
GREY/PINK PEARL (LTD ED), SEA/GREEN PEARL (LTD ED), WHITE/BROWN



shown: No Thrills for the Cautious in new millennium tortoise



shown: Far Away and Lost in Joy in sea/green pearl (ltd ed)

073 - JETS TO BRAZIL
65□12-130



AVAILABLE IN: AQUA/SEAFOAM, AZURE STRIPE, BLACK, BURNT UMBER, BURGUNDY/SEAFOAM, BURGUNDY, CRIMSON STRIPE, WHITE/BROWN

068 - LOVERS IN THE BACKSEAT
60□13-150



AVAILABLE IN: BURGUNDY/SEAFOAM, BURGUNDY, BURNT UMBER, CRANBERRY, OFF WHITE STRIPE

LIMITED EDITION PEARL SERIES
 FEATURING 3 NEW COLORS WITH MULTI-LAYERED
 PEARLESCENT ACETATE AND MIRRORED LENSES



GREY/PINK PEARL



AVAILABLE IN THE FOLLOWING STYLES:
 144 FAR AWAY AND LOST IN JOY
 138 BYE BYE BLUES
 135 THE SPORTING LIFE
 104 THE CRAFTY ENGINEER
 099 FIST FULL OF DOLLARS

SEA/GREEN PEARL



AVAILABLE IN THE FOLLOWING STYLES:
 158 STARSTRUCK
 157 UNTIL THE BIRDS RETURN
 155 SLEEPLESS IN SILVERLAKE
 148 A SACRIFICE TO SOPHISTICATION
 144 FAR AWAY AND LOST IN JOY
 135 THE SPORTING LIFE
 131 OLYMPIC AIRWAYS
 118 LEGION OF INDECENCY
 099 FIST FULL OF DOLLARS

BROWN/GOLD PEARL



AVAILABLE IN THE FOLLOWING STYLES:
 158 STARSTRUCK
 156 BRAND NEW DAY
 155 SLEEPLESS IN SILVERLAKE
 154 LOST IN THE LIBRARY (S)
 148 A SACRIFICE TO SOPHISTICATION
 135 THE SPORTING LIFE
 131 OLYMPIC AIRWAYS
 118 LEGION OF INDECENCY
 104 THE CRAFTY ENGINEER





shown: Lost in the Library in matte black

RX87 - KID ROYALE

53□17-140



AVAILABLE IN: BLACK, BROWN/GOLD PEARL, MATTE BLACK, NEW MILLENNIUM TORTOISE, WHITE/BROWN

RX80 - BLANK GENERATION

47□19-140



AVAILABLE IN: BLACK, BURNT UMBER, CRIMSON STRIPE, MATTE BROWN/ORANGE, WHITE/BROWN

RX79 - HOPSCOTCH HOLIDAY

50□15-138



AVAILABLE IN: AZURE STRIPE, BLACK, CARAMEL/SEAFOAM, CRIMSON STRIPE, NEW MILLENNIUM STRIPE, SIENNA STRIPE

RX78 - HIGHER THAN THE STARS

51□17-135



AVAILABLE IN: AZURE STRIPE, BLACK, CRIMSON STRIPE, NEW MILLENNIUM TORTOISE, SIENNA STRIPE

RX77 - HIGHWAY TO HELL-O

54□16-140



AVAILABLE IN: BLACK, BURNT UMBER, CRIMSON STRIPE, MATTE BROWN/ORANGE, NEW MILLENNIUM TORTOISE

RX86 - CLEAR SPIRITS

53□17-135



AVAILABLE IN: BLACK, BROWN/GOLD PEARL, BURGUNDY/SEAFOAM, GREY/PINK PEARL, NEW MILLENNIUM TORTOISE

RX76 - UNTIL NEXT SUMMER

48□16-135



AVAILABLE IN: AZURE STRIPE, BLACK, BURGUNDY/SEAFOAM, MATTE BROWN/ORANGE

RX75 - AGNES IN AMSTERDAM

55□15-138



AVAILABLE IN: CRANBERRY, SIENNA STRIPE, WHITE/BROWN

RX74 - ELEVATOR EYES

57□12-140



AVAILABLE IN: BLACK, CRIMSON STRIPE, MATTE BROWN/ORANGE, SIENNA STRIPE

RX72 - FINDING FOCUS WITHIN

51□18-140



AVAILABLE IN: BLACK, BURNT UMBER, CRANBERRY, CRIMSON STRIPE, GREY/PINK PEARL, MATTE BROWN/ORANGE, NEW MILLENNIUM TORTOISE, SEA/GREEN PEARL, SIENNA STRIPE

RX71 - TOUR DE FRIENDS

51□17-140



AVAILABLE IN: AZURE STRIPE, BLACK, BROWN/GOLD PEARL, BURNT UMBER, CRANBERRY, CRIMSON STRIPE, MATTE BROWN/ORANGE, NEW MILLENNIUM TORTOISE, SEA/GREEN PEARL, SIENNA STRIPE

RX70 - MY HEART RATES RAPID

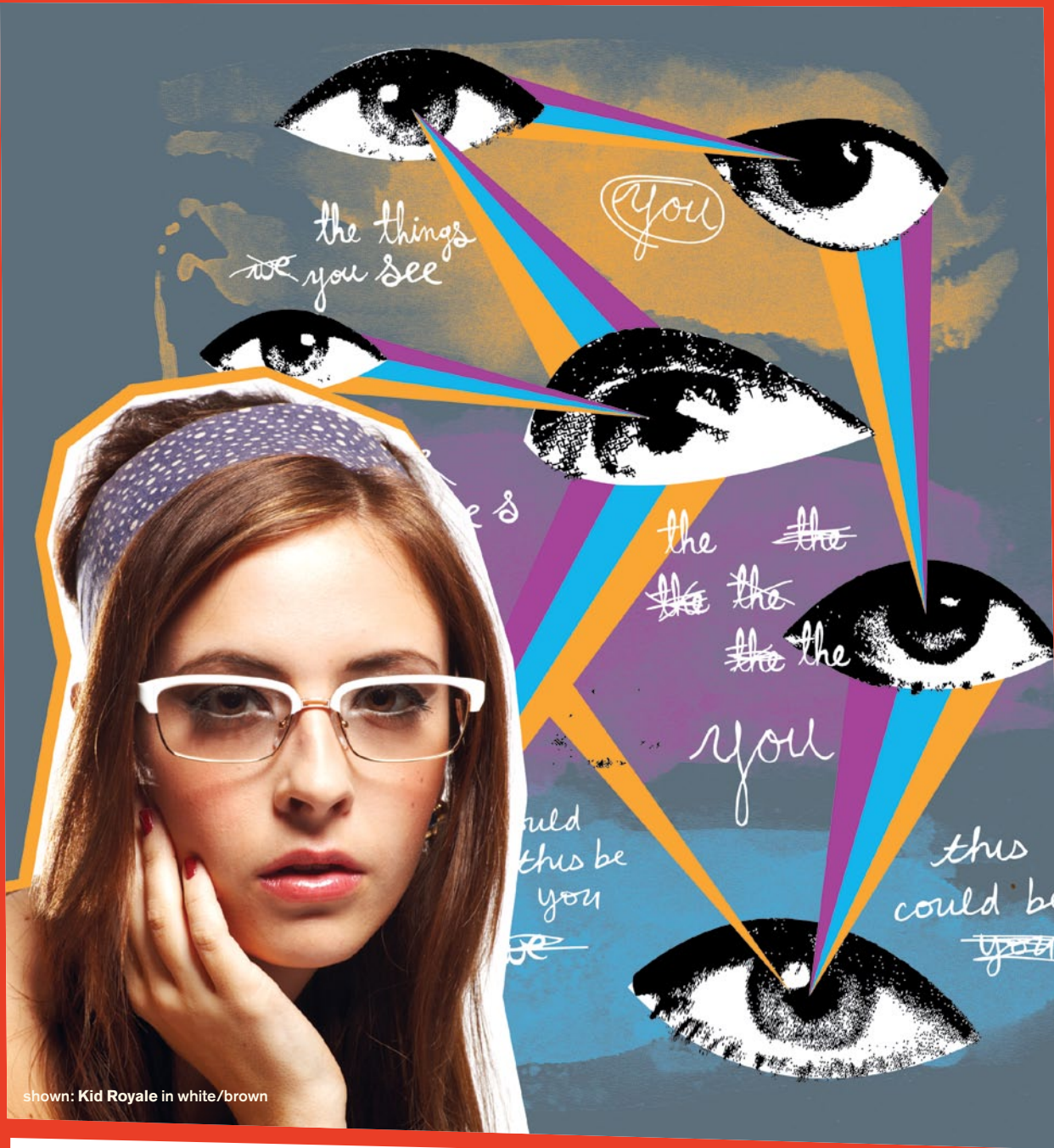
56□15-138



AVAILABLE IN: BLACK, MATTE BROWN/ORANGE

shown: Tomorrow Noon in new millennium tortoise





shown: Kid Royale in white/brown

RX85 - HOLD MY HAND AS WE ASCEND
51□18-140



AVAILABLE IN: BLACK, BROWN/GOLD PEARL, BURNT UMBER, NEW MILLENNIUM TORTOISE, SEA/GREEN PEARL

RX67 - INSTANT INTELLECTUAL
55□17-140



AVAILABLE IN: AQUA/SEAFOAM, BLACK, BURGUNDY/SEAFOAM, BURNT UMBER, MATTE BLACK, NEW MILLENNIUM TORTOISE, WHITE/BROWN

RX66 - POST AEROSOL YEARS
56□15-140



AVAILABLE IN: AQUA/SEAFOAM, BURGUNDY/SEAFOAM, BURNT UMBER, WHITE/BROWN

RX69 - NAPOLEON'S KRYPTONITE
57□12-138



AVAILABLE IN: BLACK, MATTE BROWN/ORANGE, WHITE/BROWN

RX68 - BLUE SKY REVOLUTION
54□17-140



AVAILABLE IN: BLACK, BURGUNDY/SEAFOAM, BURNT UMBER, MATTE BLACK, NEW MILLENNIUM TORTOISE, WHITE/BROWN

RX64 - HIGH FIVE HOLIDAY
56□15-135



AVAILABLE IN: AMBER/YELLOW, BURGUNDY/SEAFOAM, BURNT UMBER

RX61 - PEACE OF MIND
54□16-135



AVAILABLE IN: AMBER/YELLOW, AQUA/SEAFOAM, BLACK, BURNT UMBER, CRANBERRY, WHITE/BROWN

RX84 - WITH YOU IN ROCKLAND

52□18-140



AVAILABLE IN: BLACK, BROWN/GOLD PEARL, BURNT UMBER, NEW MILLENNIUM TORTOISE, SEA/GREEN PEARL

RX55 - HIDDEN HANDSHAKE

54□16-135



AVAILABLE IN: BLACK, CARAMEL/SEAFOAM, LIGHT BROWN STRIPE, MATTE BROWN/ORANGE

RX54 - HARMONY IN MY HEAD

51□16-130



AVAILABLE IN: CARAMEL/SEAFOAM, CRANBERRY

RX52 - PAPER PLANES

47□16-125



AVAILABLE IN: BURGUNDY/PINK, CARAMEL/SEAFOAM, LIGHT BROWN STRIPE

RX47 - TRIED AND TRUE

54□17-140



AVAILABLE IN: BLACK, BURNT UMBER, CRANBERRY, CRIMSON STRIPE, GREY/PINK PEARL, NEW MILLENNIUM TORTOISE, SIENNA STRIPE

RX60 - A FRIEND IN TWEED IS A FRIEND INDEED

49□19-140



AVAILABLE IN: AQUA/SEAFOAM, BLACK, BURGUNDY/SEAFOAM, BURNT UMBER, CRIMSON STRIPE, NEW MILLENNIUM TORTOISE, MATTE BROWN/ORANGE, SIENNA STRIPE

RX59 - THE PATH OF LEAST RESISTANCE

54□17-135



AVAILABLE IN: BLACK, BURNT UMBER, CRIMSON STRIPE, GREY/PINK PEARL, LIGHT BROWN STRIPE, NEW MILLENNIUM TORTOISE, SEA/GREEN PEARL, SIENNA STRIPE

RX83 - TOMORROW NOON

56□15-140



AVAILABLE IN: BLACK, BURNT UMBER, CRANBERRY, NEW MILLENNIUM TORTOISE

RX58 - LOST IN THE LIBRARY

53□17-140



AVAILABLE IN: AQUA/SEAFOAM, AZURE STRIPE, BLACK, BROWN/GOLD PEARL, BURNT UMBER, CRIMSON STRIPE, MATTE BLACK, MATTE BROWN/ORANGE, NEW MILLENNIUM TORTOISE, SIENNA STRIPE, TORTOISE,

RX56 - MUSTACHE MUSEUM

58□15-135



AVAILABLE IN: BLACK, LIGHT BROWN STRIPE, MATTE BROWN/ORANGE

RX82 - A SENTIMENTAL MOOD

46□18-135



AVAILABLE IN: BLACK, BURNT UMBER, CRANBERRY, CRIMSON STRIPE, MATTE BROWN/ORANGE

RX46 - STAR CLAIMER

55□18-140



AVAILABLE IN: BLACK, BROWN/GOLD PEARL, BURNT UMBER, NEW MILLENNIUM TORTOISE

RX45 - STYLE COUNCIL LUNCHBREAK

55□18-140



AVAILABLE IN: BLACK, BURGUNDY/SEAFOAM, NEW MILLENNIUM TORTOISE

RX44 - MINIATURE PHILOSOPHER

50□16-135



AVAILABLE IN: BLACK, BURNT UMBER, CRANBERRY, NEW MILLENNIUM TORTOISE, SIENNA STRIPE, TORTOISE

RX36 - DRAG RACE TO FREEDOM

59□12-135



AVAILABLE IN: BURNT UMBER, LIGHT BROWN STRIPE

RX35 - ALL NIGHT DISCO PARTY

53□16-135



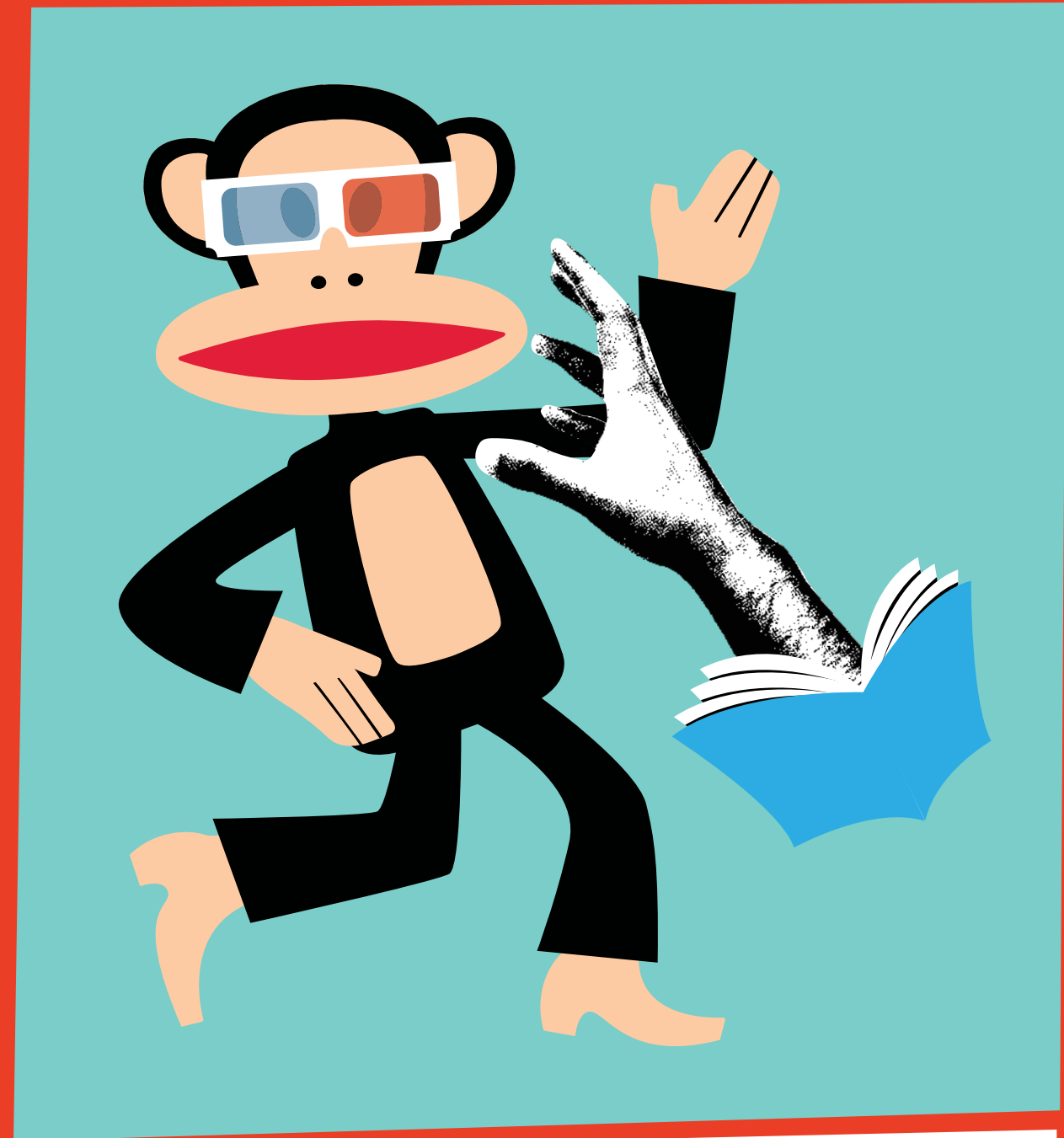
AVAILABLE IN: BLACK, BURGUNDY, BURNT UMBER, CHOCOLATE STRIPE, CRANBERRY, CRIMSON STRIPE, MATTE BROWN/ORANGE, SIENNA STRIPE

RX32 - SELF PRESERVATION SOCIETY

57□15-140



AVAILABLE IN: AZURE STRIPE, BLACK, BROWN/GOLD PEARL, BURGUNDY/SEAFOAM, BURNT UMBER, CARAMEL/SEAFOAM, CRIMSON STRIPE, NEW MILLENNIUM STRIPE, SIENNA STRIPE



RX81 - BLANK GENERATION

51□19-140



AVAILABLE IN: BLACK, BURNT UMBER, CRIMSON STRIPE, MATTE BROWN/ORANGE, WHITE/BROWN

RX27 - A IS FOR ACTION

55□15-140



AVAILABLE IN: BLACK, BURNT UMBER, CARAMEL/SEAFOAM, CRANBERRY, CRIMSON STRIPE, DARK BROWN, GREY/PINK PEARL, LIGHT BROWN STRIPE, MATTE BROWN/ORANGE, NEW MILLENNIUM TORTOISE, SIENNA STRIPE

RX25 - BEAT POET HOLIDAY

53□13-140



AVAILABLE IN: BLACK, BROWN/GOLD PEARL, BROWN/ORANGE, CARAMEL/SEAFOAM, LIGHT BROWN STRIPE, NEW MILLENNIUM TORTOISE

RX07 - PINKERTON

54□16-135



AVAILABLE IN: BLACK, BURGUNDY, CARAMEL/SEAFOAM, CRANBERRY, DARK BROWN, LIGHT BROWN STRIPE, SIENNA STRIPE

RX05 - BLUES EXPLOSION

52.5□17-140



AVAILABLE IN: BLACK, BURGUNDY, CARAMEL/SEAFOAM, DARK BROWN, LIGHT BROWN STRIPE, NEW MILLENNIUM TORTOISE



shown: Blank Generation in white/brown

rep contact info

GLOBAL HEADQUARTERS

Baumvision Incorporated
3100 Pullman Street Unit C
Costa Mesa, CA 92626
tel: 1.866.415.8842
fax: 1.949.548.0454
info@baumvision.com
PRESS CONTACT
Nataly Nehoray
nataly@baumvision.com

EUROPE H.Q. & AFRICA

Baumvision Europe, Ltd.
Wiedner Gürtel 12 Top AA
tel: +43.1.924.6303
fax: +43.1.924.6306
office@baumvisioneurope.com
PRESS CONTACT
Karl Untner
karl@baumvisioneurope.com

SOUTHERN CALIFORNIA

Huy Dang
mobile: 1.714.608.5000
tel: 1.213.622.6121
fax: 1.213.291.7420
huy@baumvision.com

ORANGE, RIVERSIDE, & SAN DIEGO COUNTIES

Brent Locken
tel: 1.714.932.7417
brent@baumvision.com

NORTHERN CALIFORNIA, PACIFIC NORTHWEST, & SOUTHWEST

Brett Cates
tel: 1.831.402.2110
brett@baumvision.com

ILLINOIS & WISCONSIN

Rochelle Breger
tel: 1.708.826.1110
rochelle@baumvision.com

MIDWEST & SOUTH

Sherry Tizzano
tel: 1.615.533.2279
sherry@baumvision.com

ROCKIES

Lynn Caffrey
tel: 1.303.349.4901
lynn@baumvision.com

EAST COAST & SOUTHEAST

Castel Valere-Couturier
mobile: 1.303.525.9433
fax: 1.347.521.9433
castel@uniquegroupnyc.com

CANADA

David Law
tel: 1.780.909.4264
david@baumvision.com

MEXICO

Global Phenomena S.A. de C.V.
Juliana García Cornejo
tel: +52.777.313.0452
mobile: +52.777.135.5195
juliana@globalphenomena.com

UNITED KINGDOM

Tim Webb
tel: +44.752.855.0359
glasseswebb@yahoo.com

AUSTRIA

Roman Rudlof
mobile: +43.699.18.138.494
roman@baumvisioneurope.com

NORTH GERMANY

Hauke Peters
mobile: +49.172.425.7577
hauke@baumvisioneurope.com

SOUTH GERMANY

Ralph Albrecht
mobile: +49(0)160.96987014
ralph@baumvisioneurope.com

PARIS (SUBURBS) & EAST OF FRANCE

Clement Robin
tel: +43.1.924.6303
fax: +49.1.924.6306
mobile: +33.664.198.141
clement@baumvisioneurope.com

NORTHERN FRANCE, LUXEMBOURG, & WALLONIE

Anne Leweurs
mobile: +33.6.75.29.16.38
anne@baumvisioneurope.com

SOUTHWEST OF FRANCE

Catherine Laporte
mobile: +33.607.821.072
catlaporte@gmail.com

SOUTHEAST OF FRANCE

Laurent Wagner
mobile: +33.647.692.109
tel: +43.1.924.6303
fax: +43.1.924.6306
laurent@baumvisioneurope.com

NORTH ITALY

Flavio Pozzan
mobile: +39.346.019.3769
flavio@baumvisioneurope.com

CENTRAL & SOUTH ITALY

Andrea Magni
tel: +39.335.380.645
fax: +39.071.979.8272
parisparis@alice.it

FINLAND

Tapio Rosenberg
tel: +358.10.666.3095
fax: +358.10.666.3091
mobile: +358.10.666.3099
tapio.rosenberg@suomenoel.fi

SPAIN

Antonio Lopez
tel: +34.915.224.093
fax: +34.915.223.834
lula@luladistribuye.com

BELGIUM & NETHERLANDS

Etienne Fredericks
mobile: +316.290.47.084
etienne@sightstylers.com

GREECE & CYPRUS

Yannis Reisis
tel: +30.2.103.545.050
fax: +30.2.103.454.050
info@glassroom.gr

SWEDEN

Mathias Bosson
mobile: +46.701.423.020
mathias@alivestyle.se

SWITZERLAND

Deutschs Schweiz
Ralph Albrecht
mobile: +49(0)160.96987014
ralph@baumvisioneurope.com
Romandie
Laurent Wagner
mobile: +33.647.692.109
laurent@baumvisioneurope.com
Svizzera Italiana
Flavio Pozzan
mobile: +39.346.019.3769
flavio@baumvisioneurope.com

SCANDINAVIA

Alivestyle Aps
mobile: +45.7022.5600
mail@alivestyle.dk

AUSTRALIA

Eye Candy Optics
tel: +61.2.9331.2655
fax: +61.2.9331.2677
catherine@eyecandyoptics.com

MIDDLE EAST

Tarek El Sallab
tel: +20.101930097
telsallab@link.net

ISRAEL

Ronen Shani Agencies
tel: +972.(0)3.574.8649
fax: +972.(0)3.678.6689
ronen@rshani.com

INDONESIA

Sentral
Eddy Setiawan
tel: +623.6122.3222
fax: +623.6126.2954
eddy@sensolnet.com

SINGAPORE & MALAYSIA

U. Vision Eyewear
Colin Kok
tel: +65.6396.8068
fax: +65.6396.8069
colin@uvisioneyewear.com.sg

THAILAND

We Do Asia
Jonas Koblin
tel: +66.2712.7895
fax: +66.2712.7897
mail@wedo.asia

TAIWAN

Chang's Optical
James Chang
tel: +866.2.2715.0111
fax: +866.2.2715.0120
james@changsoptical.com.tw

HONG KONG

Opticon
Christopher Chan
tel: +852.2724.1782
fax: +852.2724.1680
cc@opticon.com.hkDavid Law
tel: 1.780.909.4264
david@baumvision.com

KOREA

Zio
Zio Lee
tel: +82.2.364.1132
fax: +82.2.365.5543
zio-lee@hanmail.net



photographer: Kevin McCarty
stylist: Deme Mitchell
hair & make-up: Kristina Cardwell
models: Cassie Jones & Mike Zirbes

www.paulfrank.com
www.baumvision.com/paulfrank
www.facebook.com/paulfrankoptometrics